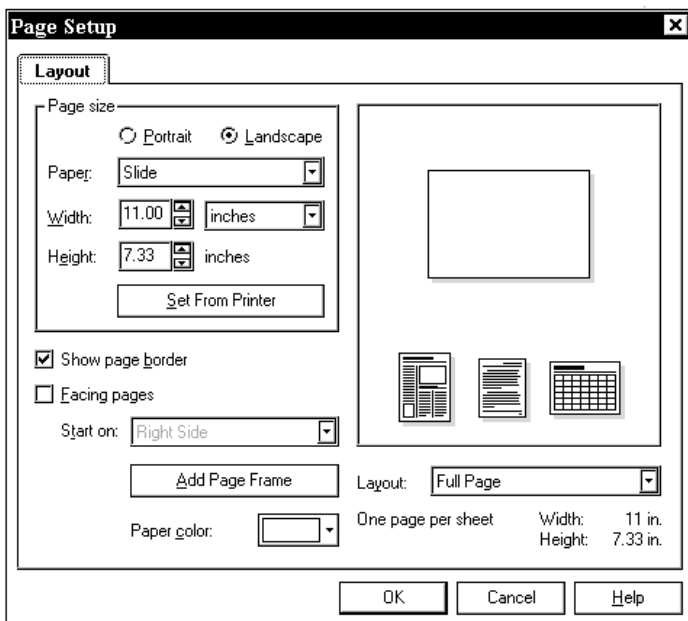


File Preparation Guide

Before setting up your CorelDRAW! file please follow the Windows 98 Printer Setup tip sheet (next page) to properly configure your Windows 98 environment.

1. All slides must be contained in ONE .cdr file. Individual .cdr files are not accepted. If you prefer to work with individual files, Imagers requires .prn files (see item 6). These guidelines are for 35mm slide setup; for overheads or color lasers, set your page size to 8.5"x11" with .5" margins. For both slides and prints, follow the 35mm guidelines.
2. A complete list of all fonts used in your file must be provided. Unsupported fonts must be supplied. For TrueType, send .ttf files. For Adobe, send .pfm and .pfm files. If in doubt, send font files to ensure proper output.
3. Select Slide in the Page Setup dialog box from Layout menu to yield an 11"x7.33" page.



4. The Page Color option does not work for slide, print, or overhead output. A rectangle filled with the desired color must be drawn to create a color background. Be certain this rectangle covers the entire background. Draw a rectangle filled with white for a white

background. Note: We do not recommend using a white background because it will cause all color to be washed out.

5. Allow a minimum margin of 1/4" on all sides to ensure image is not clipped by the slide mount.
6. You may send .prn files if necessary. Setup must as stated above. Your .prn files cannot be opened to verify setup or adjust settings; files prepared improperly will incur the same output charges as properly prepared files.

Font Usage

We support the many fonts that ship with DRAW, but a complete list of the fonts used in your document(s) must be supplied (specify Adobe or TrueType). Failure to provide a font list will delay processing. Choose Info Settings from Print/Options/Options tab to print or save a list of fonts used in the document. (or for Corel 7 only: view Text Statistics from the Text menu).

Color Suggestions

When defining color for slides, utilize RGB color for all elements. This will allow a higher degree of fidelity between screen and output.

The color mode for color lasers should be CMYK. RGB is not a dependable color mode choice for color laser output because it is not the color mode the printers are designed to output. While our technicians will attempt to ensure the most acceptable color possible, RGB output is not consistent.

Other Items

- Additional charges will be assessed for jobs totalling over 20 megs (output file, supports, and fonts) at a rate of \$2.50 per meg.
- Jobs sent on multiple disks will incur charges of \$5.00 per disk. We suggest removables (CD, Zip, or Jaz disks) for large files. Do not compress files on removables.
- Corel 3.0, 5.0, and CHART are not directly supported; print to .prn files as described.

For 35mm slide output, Imagers Film Recorder should be chosen as your output device. Printer files for the recorder and our other output devices are available for download from our web site at www.imagers.com in the Downloads area.

The QMS Colorscript 100 Model 10 (available on Win 95 CD) may be chosen as an alternative, but we recommend using the driver specifically designed for the the chosen output device to ensure proper output.

Install the printer as you would any Win 98 printer by clicking "Add a Printer" in the Printers dialog and following the steps. (When prompted to choose a printer click have disk and choose the directory containing the Imagers printer files.) Once the printer is installed, follow these setup guidelines:

1. Select Settings and Printers from Start menu. Right-click Imagers Film Recorder, and get Properties.
2. Select the Paper tab and set to Letter. (Fig 1)
3. **Click Unprintable Area and set to zero left and right and .58 top and bottom.** (Fig 2)
4. Select the PostScript tab and ensure Print PostScript error information is not checked. (Fig 3)
5. Click Advanced and select PostScript Level 2, Compress Bitmaps and Pure Binary Data. (Fig 4)

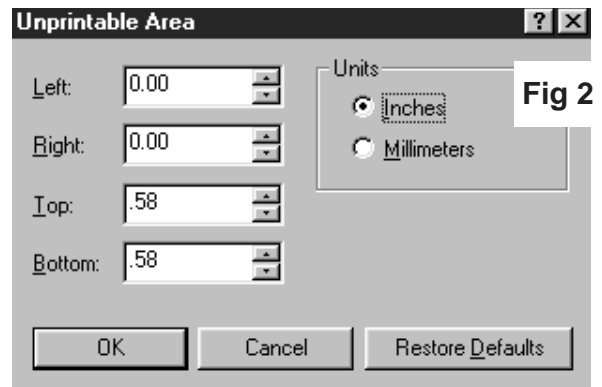


Fig 2

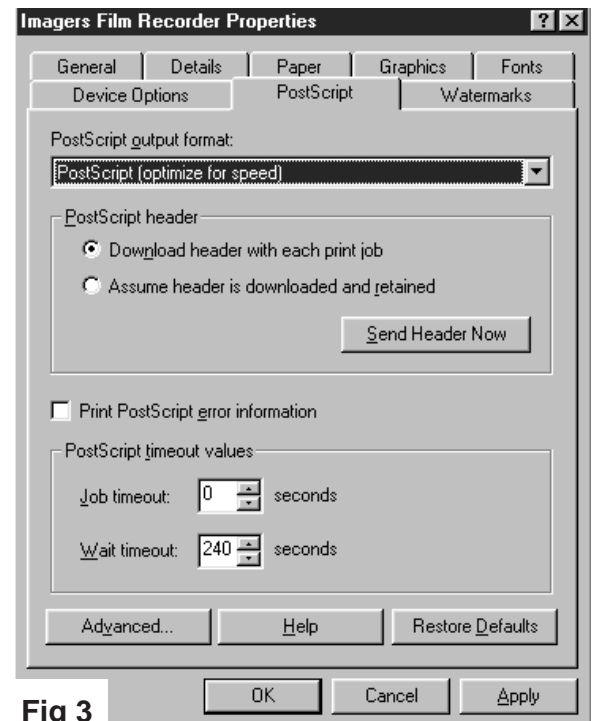


Fig 3

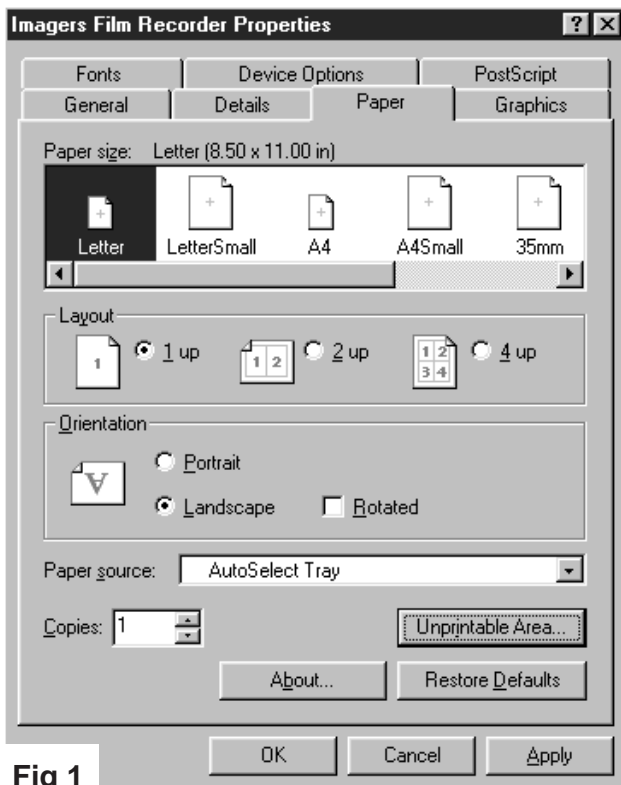


Fig 1

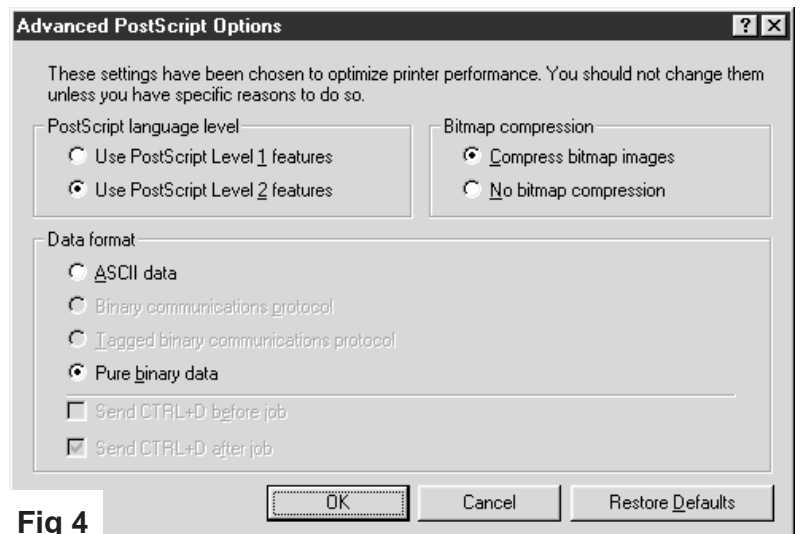


Fig 4