

Before setting up your file, please follow the Windows 98 Printer Setup tip sheet (next page) to properly configure your Windows 98 environment.

Font Usage

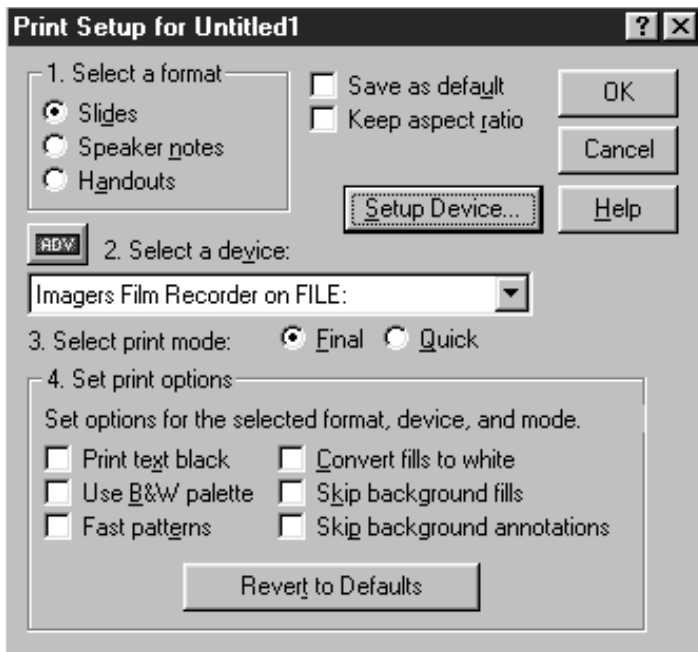
A complete list of all fonts used in your file must be supplied to ensure proper output.

Imagers supports the standard laserwriter fonts. **Any unsupported fonts must be supplied.** Send .pfm and .pfb files if Adobe, .ttf if TrueType.

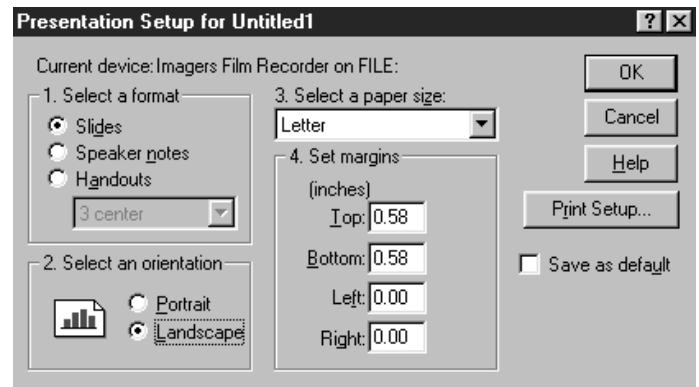
Slide Setup

First, follow the instructions on the Windows 98 Printer Setup tip sheet provided.

1. **Send us your Harvard file in its native (.pr4) format.** All slides should be contained in one file to avoid setup charges.
2. **Select Print Setup from the File menu.** Ensure that Imagers Film Recorder is selected. Click OK.



3. **Under the File menu choose Presentation Setup and set the top and bottom margins to .58, left and right margins to zero.** If a warning appears, click OK to resize for slides, then check each page to ensure text/graphics fit properly on page.



4. **Keep all objects and text inside the active area now displayed, and leave an additional 1/4" margin on all sides when placing text or graphics to avoid clipping by the slide mount.**
5. **Any imported graphics must be supplied.**
6. **Abnormalities you experience to your PostScript printer usually will be duplicated when the file is output.** Don't rely on your screen, test print to a PostScript printer whenever possible.
7. **Pattern fills will not image; only solid or gradient colors should be chosen for fills.**

Additional Charges

Additional charges will be assessed for jobs totalling over 20 megs (output file, supports, and fonts) at a rate of \$2.50 per meg.

Jobs sent on multiple disks will incur charges of \$5.00 per disk. Removables (CD, Zip, Jaz) are suggested for large files.

Do not compress files sent on removables.

For 35mm slide output, Imagers Film Recorder should be chosen as your output device. Printer files for the recorder and our other output devices are available for download from our web site at www.imagers.com in the Downloads area.

The QMS Colorscript 100 Model 10 (available on Win 95 CD) may be chosen as an alternative, but we recommend using the driver specifically designed for the the chosen output device to ensure proper output.

Install the printer as you would any Win 98 printer by clicking "Add a Printer" in the Printers dialog and following the steps. (When prompted to choose a printer click have disk and choose the directory containing the Imagers printer files.) Once the printer is installed, follow these setup guidelines:

1. Select Settings and Printers from Start menu. Right-click Imagers Film Recorder, and get Properties.
2. Select the Paper tab and set to Letter. (Fig 1)
3. **Click Unprintable Area and set to zero left and right and .58 top and bottom.** (Fig 2)
4. Select the PostScript tab and ensure Print PostScript error information is not checked. (Fig 3)
5. Click Advanced and select PostScript Level 2, Compress Bitmaps and Pure Binary Data. (Fig 4)

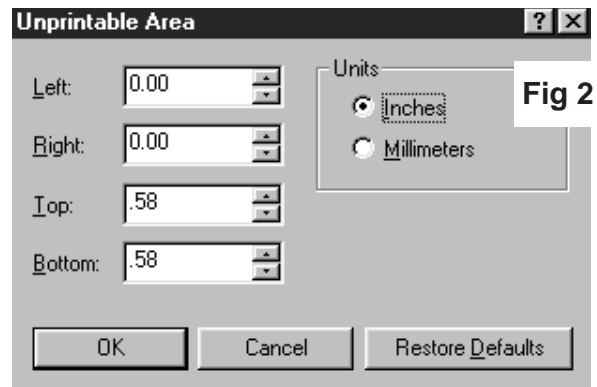


Fig 2

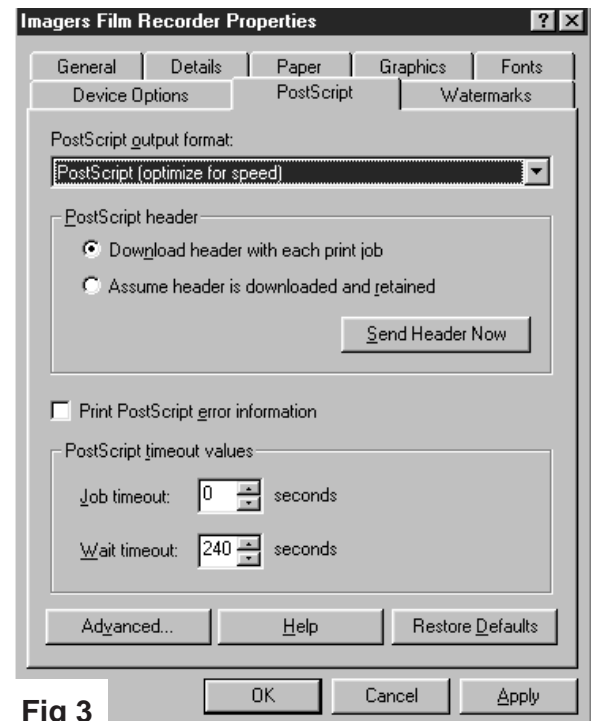


Fig 3

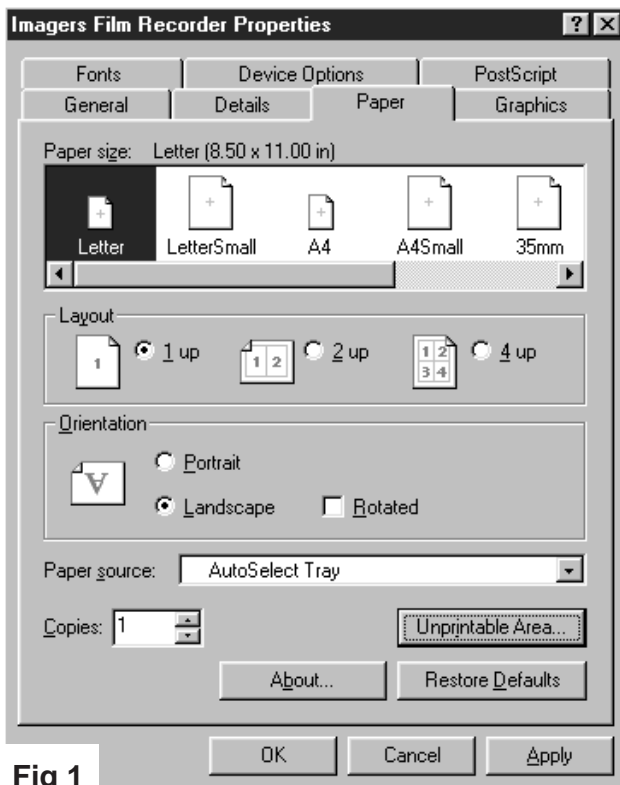


Fig 1

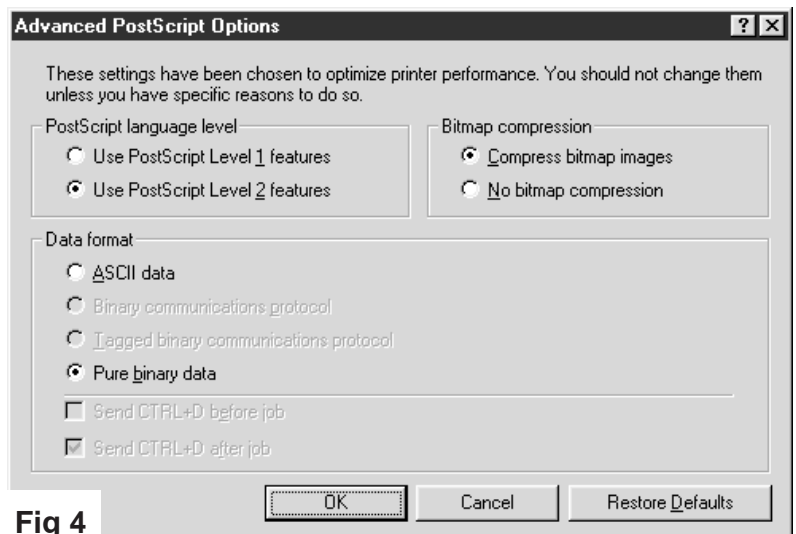


Fig 4