

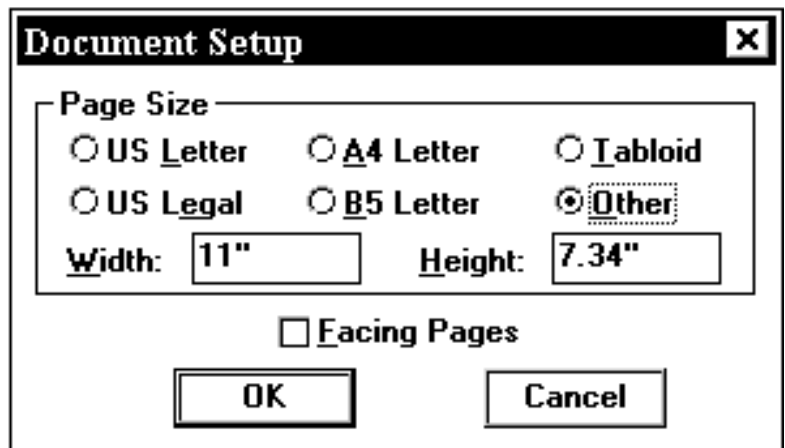
Before setting up your Quark XPress file please follow the Windows 98 Printer Setup tip sheet (next page) to properly configure your Windows 98 environment.

File Preparation Guide

1. Imagers prefers to receive your Quark XPress file in its native (.qxd) format. **All slides should be contained in one file to avoid setup charges for multiple files.**
2. **A complete list of all fonts used in your file must be supplied to ensure proper output. Unsupported fonts must be supplied.** For TrueType, send .ttf files. For Adobe, send .pfm and .pfm files. If in doubt, send the font files to ensure proper output. (Please refer to our tip sheet regarding available fonts.)
3. Any support files (such as .eps or .tiff files) must be included with order. If large scanned files are placed in your file, please notify us; **extra turnaround time may be required.**
4. **Choose the Imagers Film Recorder in the Printer Setup.** (See the Windows 95 Printer Setup tip sheet for specifics.)
Define page as stated below.

Select Document Setup from the File menu. Ensure page dimensions are 11"x7.34" as shown. Click OK.

Draw a filled rectangle covering the **entire page** on the master(s) to create your slide background. Draw a rectangle filled with white for a white background. Note: We do not recommend using a white background because it will cause all color to be washed out.



Allow a minimum .25" margin on all sides of the page (.5" is suggested) to ensure clipping of text and graphics does not occur. If files are set up incorrectly output cannot be guaranteed.

Color Suggestions

When defining color for slides, utilize the RGB color model for all elements. This will allow a higher degree of fidelity between screen and output.

The color mode for color lasers should be CMYK. RGB is not a dependable color mode choice for color laser output because it is not the color mode the printers are designed to output. While our technicians will attempt to ensure the most acceptable color possible, RGB output is **not** consistent.

Other Items

- Additional charges will be assessed for jobs totalling over 20 megs (output file, supports, and fonts) at a rate of \$2.50 per meg.
- Jobs sent on multiple disks will incur charges of \$5.00 per disk. Removables (CD, Zip, Jaz) are highly suggested for large files. Do not compress files sent on removables.
- **Abnormalities you experience to your PostScript printer usually will be duplicated when the file is output. Don't rely on your screen, test print to a PostScript printer whenever possible.**
- *Pattern fills will not image to film. Fill objects with solid or gradient colors only.*

For 35mm slide output, Imagers Film Recorder should be chosen as your output device. Printer files for the recorder and our other output devices are available for download from our web site at www.imagers.com in the Downloads area.

The QMS Colorscript 100 Model 10 (available on Win 95 CD) may be chosen as an alternative, but we recommend using the driver specifically designed for the the chosen output device to ensure proper output.

Install the printer as you would any Win 98 printer by clicking "Add a Printer" in the Printers dialog and following the steps. (When prompted to choose a printer click have disk and choose the directory containing the Imagers printer files.) Once the printer is installed, follow these setup guidelines:

1. Select Settings and Printers from Start menu. Right-click Imagers Film Recorder, and get Properties.
2. Select the Paper tab and set to Letter. (Fig 1)
3. Click Unprintable Area and set to zero left and right and .58 top and bottom. (Fig 2)
4. Select the PostScript tab and ensure Print PostScript error information is not checked. (Fig 3)
5. Click Advanced and select PostScript Level 2, Compress Bitmaps and Pure Binary Data. (Fig 4)

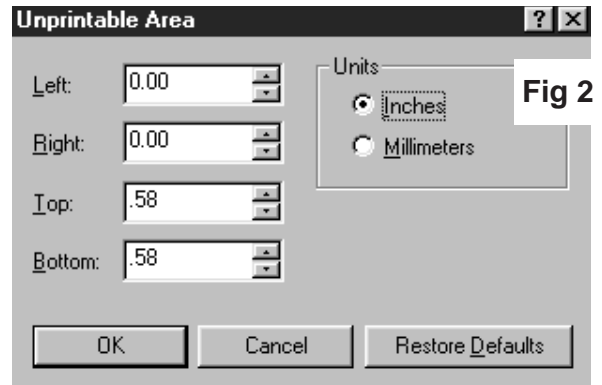


Fig 2

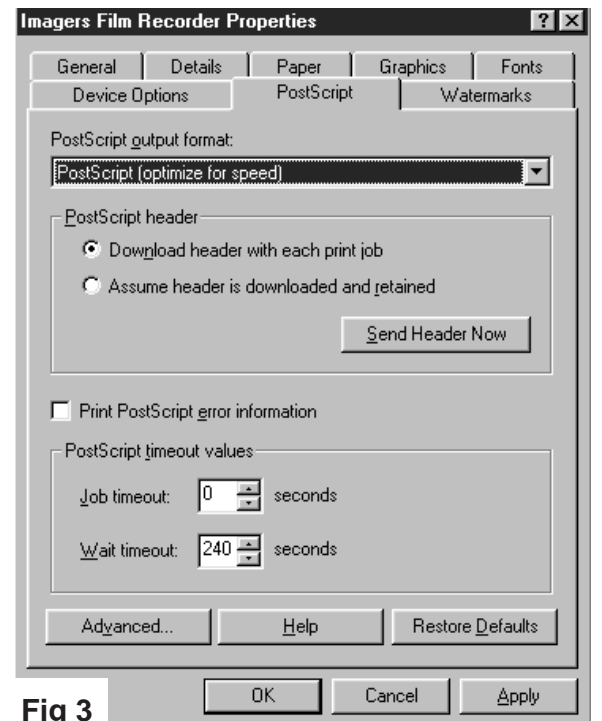


Fig 3

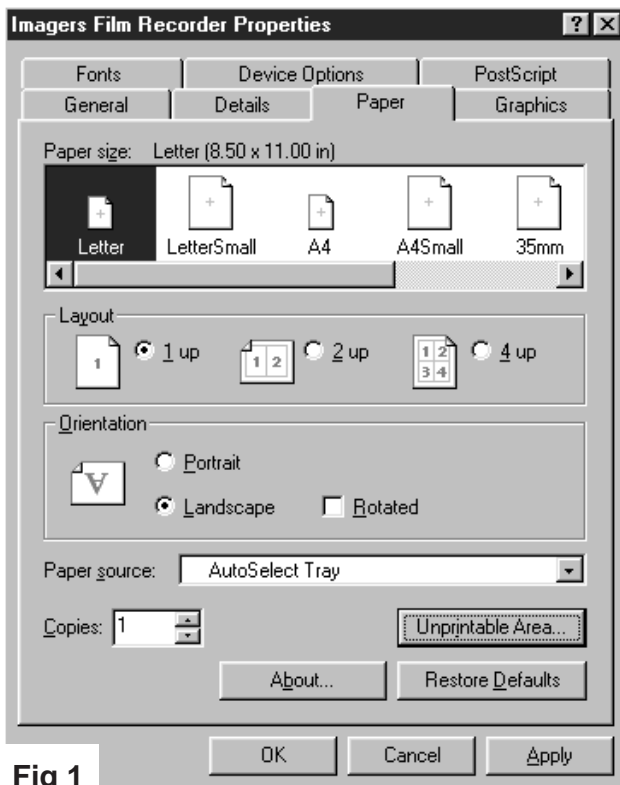


Fig 1

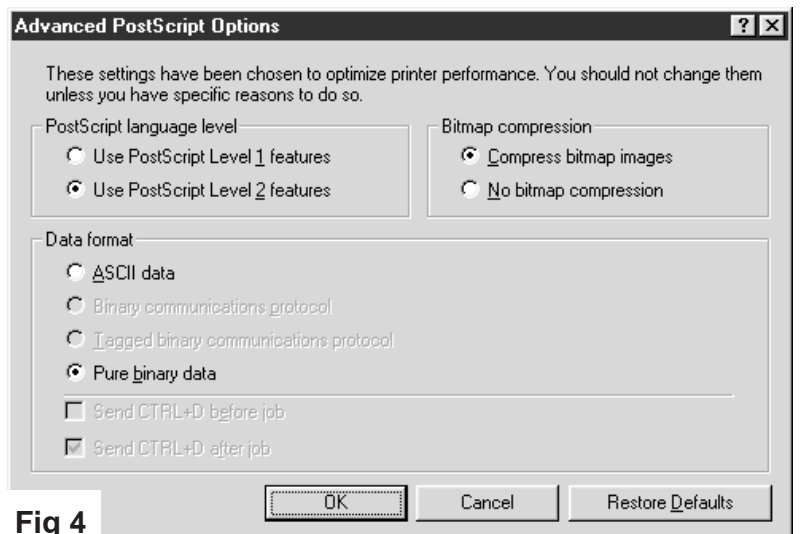


Fig 4